

Network Camera

User Manual

V 17.1

User information

Before using the camera, please read the user manual carefully, and obey to the rules when you use, thank you for purchasing the product.



Cautions:

- Please modify the user password when use this product, so as not to be stolen criminals.
- Please do not install it in the place where is wet, dusty and easy to be touched for child.
- Please install it in the draughty place, be sure not to block the air vents of camera.
- Please use and reserve it in the allowed temperature range, be sure not to dismantle it.



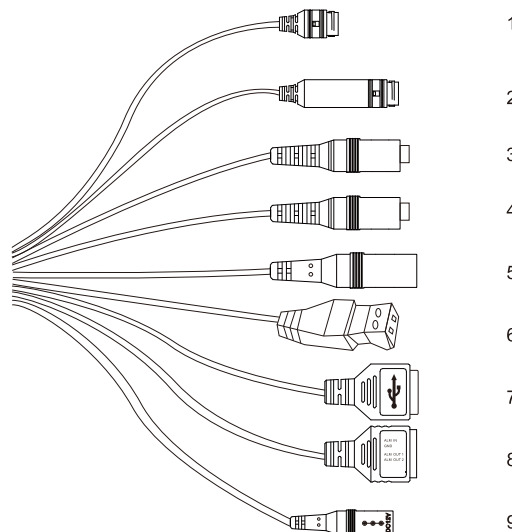
Special announcement:

- Instruction is for reference only, product please in kind prevail.
- Instruction content is according to the real-time product, we will not inform in the future.
- Instruction may include something not be inaccurate in technology or consistent with the function of product or wrong printing, please according to the explanation of our company.

2

Interface Instruction

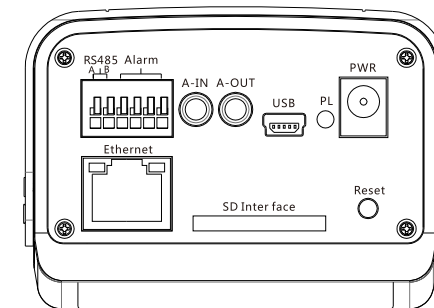
- Structural drawing is schematic drawing, only to understand the cable interface functions.



this picture is for understanding the interfaces' functions only. Different devices may not the same.

3

AT series camera interface specification



Port name	Description	Port name	Description
RS485	RS485	PL	Statute indicator
Alarm	Alarm interface	PWR	Power port
A-IN	Audio in	Reset	Reset key
A-OUT	Audio out	SD Inter face	SD slot
USB	USB interface	Ethernet	Net interface

Warranty Card

Warranty instruction:

- In warranty period, if there is any breakdown which caused by the product own defect, please connect with dealers or after-sale server of our company.
- Be sure not to use surface mail or cash on delivery to send back the product.
- Free maintain will not be given under the following circumstance:
 - Without valid warranty certificate or purchasing invoice or receipt.
 - The breakdown and damage caused by personal reasons, wrong usage and force majeure.
 - The breakdown and damage caused by maintenance, refit and dismantle movement of a non-our-company authorized maintainer.
 - Exceed the warranty period of our company's prescription.

Warranty period: one year

Your Name: _____ Your TEL: _____

Address: _____

Dealer: _____ Contact person: _____

TEL: _____ Purchase time: _____

Please take care of the warranty card and get more efficient and better service, thank you for purchasing our product!

1

Unpacking Check

After open packing box, please check the product body and accessories, if exist damage and missing, please contact the local provider in time.

Accessories List

Serial Number	Accessories Name	Amount	Unit
1	Network Camera	1	a
2	Operate Manual	1	a
3	Product Certification	1	a



According to different types, accessories list will be change, please refer to the material item.

Introduction of external cable function

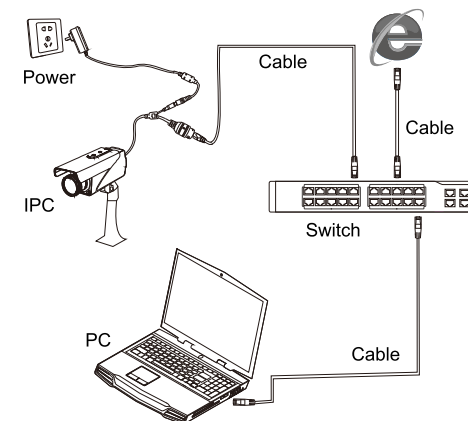
Serial Number	Interface	Function Instruction
1	LAN	Ethernet as the connection standard
2	POE+LAN	Connect stander net cable, no need for other power supply method
3	A-IN	Audio input. receive analog signal from pickup
4	A-OUT	Audio input. receive analog signal from pickup
5	Alarm	Output alarm single
6	RS485	RS485, control external devices such as PT
7	USB	Connect external devices
8	I/O	Function differs from device to device
9	POWER	Power interface, input DC 12V

4

Startup and Initiation

Step1: Please connect the network camera to LAN network as the follow diagram.

Step2: Using regular DC 12V adapter to supply electricity for the devices like network camera and switch.



Note: Turn on the power after all lines are connected.

5 Network Configuration

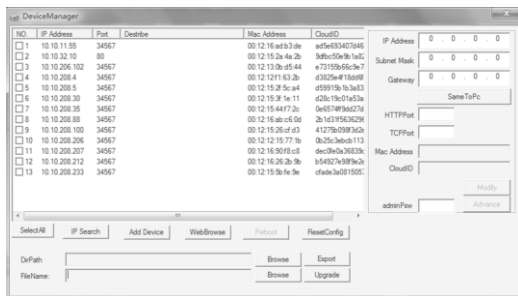
Set the default IP address to 192.168.1.10 in all network cameras before they leave the factory. In order to enable the camera to access the network smoothly, please plan the available IP segments reasonably according to your network environment.

5.1 Modify the IP Address

The camera which access the network by wired can use 【Device Manage】 to get and modify the IP address. In this paper, we will introduce the method which modify IP address by the way of 【Device Manage】 as an example. You can also login WEB and modify the IP address through network parameter configuration.

Step1: Landing wiki.xm030.com 【product software download】 > 【Device Manage】 download installation package and install the software according to the prompt.

Step2: Double-click to open 【Device Manage】 , then click 【search】 .



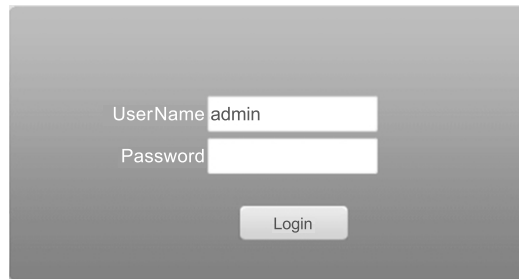
Step3: Tick the camera which needs to be modified on the left list of IP. Input the planned IP address on the right side 【IP Address】、【Subnet Mask】、【Gateway】. You also can click 【Same To PC】 and get the IP automatically, in this way you can avoid complex settings.

Step4: Click 【Modify】 after you modify the IP, then be sure to save.

5.2 Login WEB Interface

Step1: Open the IE browser, then input the modified camera IP address in the address bar and enter.

Step2: Click 【Download Control】 , then install the control following the system prompt and enter the system login interface after installation.



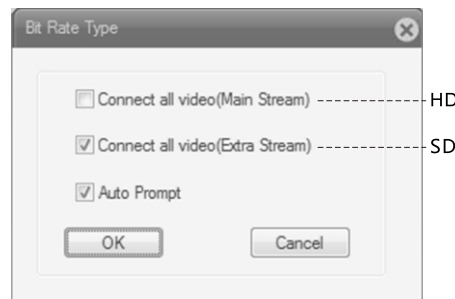
Default 【User Name】 : admin, 【Password】 : none, click 【Login】 .



Note:

Keep the IE as default intercept when you download the plug-ins. You can set the IE security level: 【Internet type】 > 【Security】 > 【Custom level】 > 【ActiveX control and plug-ins】 , all of the chooses should be enable.

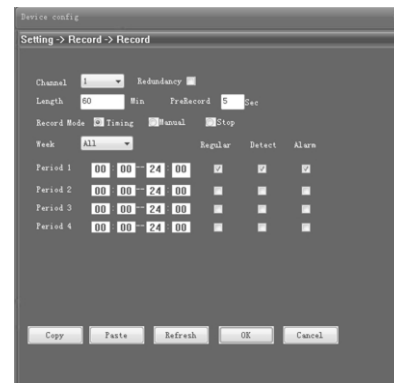
Step3: Click 【Ok】 after you choose the bit stream, then enter the real-time monitoring.



WEB interface of different products may be different, interface please in kind prevail.

6 Record Settings

Click right 【Device Config】 > 【Record】 > 【Record】 , interface as follows:



【Channel】 :Video setting for different channels.

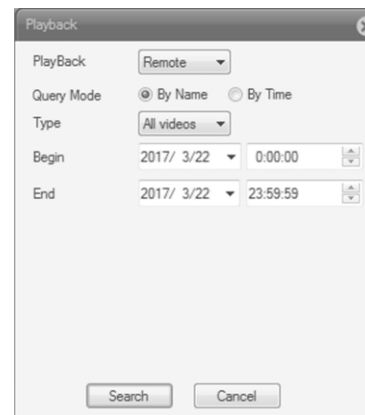
【Length】 : Set the length of each video file and default is 60 minutes.

【Period】 :Support for time slot video, only in the set time can start the record.

【Record type】 : Set the record type and it's convenient to search the video when you playback the video.

7 Video Playback

Right click 【Playback】 :



【Playback】 :Remote、 Local

【Query Mode】 : By Name 、 By Time

【Type】 : Choose the type of video playback.

【Begin】 : Choose the begin time to start video playback

【End】 : Choose the end time to end video playback

【Search】 : Search for the video that matches the selection criteria.

8 Supporting Service and Software

In order to provide more convenient operation, we developed some supporting service and software for computer and mobile and cloud service. Cameras can be managed intensively and operated uniformly through these ways as below. You can add devices to view video and manage them after registering and logging.



PC:

VMS video management system

Access method: Login wiki.xm030.com 【product software download】 > 【VMS】 download the latest version of the video management system [VMS].



Mobile:

Login Android application market (such as assistant of Baidu, assistant of 360 and so on.) and Apple users login APP store. Then search the keywords [XMeye] to complete download and installation.



Cloud platform :

Login cloud service website: enter into www.xmeye.net. Click 【new users guide】 to complete the registration and landing cloud service account, then you can add device to achieve remote management and view.